

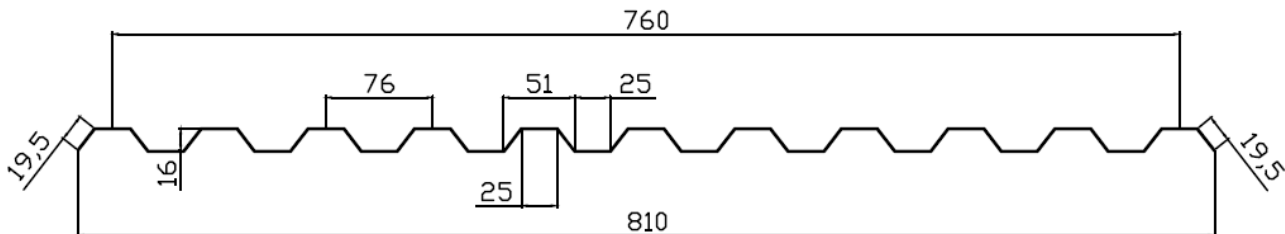
# SUNSKY® Technical Guide-DIY

## Profile: GRECA (GRECA 76/TRAPEZE)



17/10/2014

### Profile Drawing



### Profile Dimensions

Profile (mm)	Thickness (mm)	Length (m)	Overall width (mm)	Cover Width (mm)	Side-Lap (%)
76/16	0.8	1.8 – 7.2	810	760	6.2

### Load / Span Data

Maximum purlin spacing for an end-span is 900mm

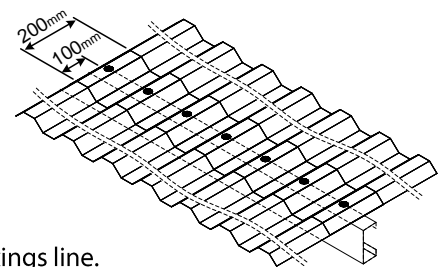
Maximum purlin spacing for a mid-span is 1200mm

For high wind areas please contact our local office for further support.

- The specified dimensions do not supersede the requirements of local construction codes.
- The given spans are according to a minimum slope of 10%.
- The maximum roof spans are based on calculation model and practical testing.
- The mentioned load refers to wind and snow load only.
- For vertical application spans can be increased by 10%.

### Panel Length

- Maximum recommended panel length - 7.2 m.
- Recommended longitude overlap of 200mm above purlin.
- Each panel to extend 100mm over the fixings line on the purlin.
- Panels should overhang Min. 50mm to Max. 150mm beyond the last screw fixings line.



### Curved Roof

- Minimum curving radius 4.0 m.



### Positioning

- Make sure the UV protected side faces out.
- Side-lap of SUNSKY panels must be installed against the primary direction of rain.
- Do not pull, stretch or force SUNSKY panels while positioning and installing.



# SUNSKY® Technical Guide-DIY

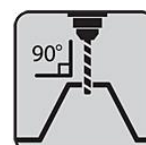
## Profile: GRECA (GRECA 76/TRAPEZE)



17/10/2014

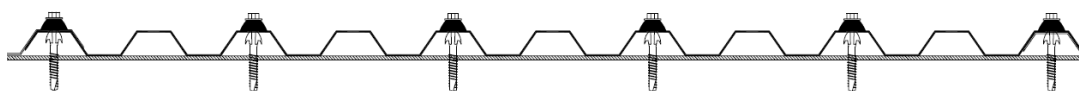
### Fastening

- **When not** using Clearfix or Polymate screws, pre-drill 10mm holes at crests where screws are positioned.
- Start fastening the screws from the first lateral corrugation through the pre-drilled holes.
- Start fastening the screws on the lower edge purlin (End-lap), through every other crest (1).
- Fasten screws at the internal purlins, through every third crest, counting from the third crest at the same side (2).
- Fasten screws at the upper edge purlin, through every other corrugation crest, starting at the same side (1).
- **Do not over-tighten!**

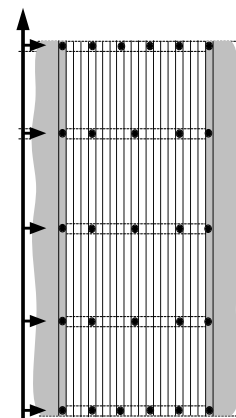
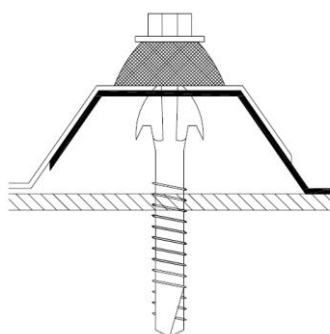
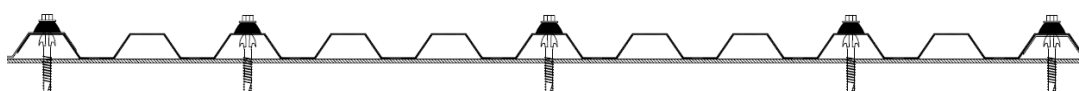


### Fastening Location

#### 1) Lower and Upper Edge Purlins Fixing



#### 2) Internal Purlins Fixing



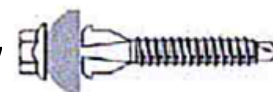
### Screws and Washers Specification

- Crest fixing: Self-drilling Clearfix or Polymate screw 50mm x 14g.

Clearfix Screw



Polymate Screw



# SUNSKY® Technical Guide-DIY

## Profile: GRECA (GRECA 76/TRAPEZE)



17/10/2014

### Important Notes

- Use only PALRAM approved accessories, including EPDM rubber washers, silicones, sealing tape, closure fixtures etc.
- For clear SUNSKY onto wooden purlins, apply white acrylic paint, or aluminum tape, in order to prevent over-heating of the purlins.



### Cutting Tips

- Use jigsaw or circular saw with fine tooth blades.
- Apply high blade speed with moderate feeding rate.
- Support the sheets near the cutting line.
- Clean the dust and cutting chips after cutting.



### Fastening Tips

- Use adjustable electric screwdriver.
- The screw must be installed perpendicular to the SUNSKY sheet.
- **Important: Do not over-tighten.**



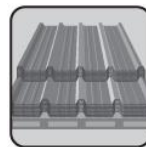
### Safety

- Do not step directly on the panel.
- Use stepping boards.
- Work according to local safety regulations.



### Handling and Storage

- Store in a dry shaded place, protect from direct sunlight and rain.
- Avoid covering the sheets with heat absorbing materials.
- Avoid contact or environment of chemicals.
- Protect the sheets from any physical damage.



Inasmuch as PALRAM Industries has no control over the use to which others may put the material, it does not guarantee that the same results as those described herein will be obtained. Each user of the material should make his own tests to determine the material's suitability for his own particular use. Statements concerning possible or suggested uses of the materials described herein are not to be construed as constituting a license under any PALRAM Industries patent covering such use or as recommendations for use of such materials in the infringement of any patent. PALRAM Industries or its distributors cannot be held responsible for any losses incurred through incorrect installation of the material. In accordance with our company policy of continual product development you are advised to check with your local PALRAM Industries supplier to ensure that you have obtained the most up to date information.